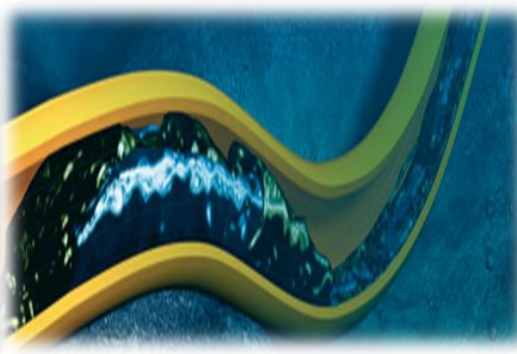
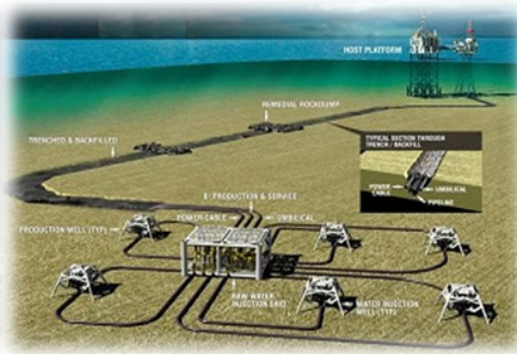




PETROPLAT

"We are on ***your*** side"



Company Profile



About Us

Established in 2010, PetroPlat is an Australian company with a branch office in Nigeria (registered under the law of Nigeria) and a provider of Process Engineering and Safety & Risk Management Services to the oil & gas, energy and resources industry. Our knowledge and technical expertise stem from our people whose proven experience and track record across the energy industry have enabled our clients to achieve sustained business results.

Our organization employs exclusively Process & Safety Engineering approach to develop and deliver solutions that satisfy our clients' business needs. Since our inception, we have expanded our base of operations from Melbourne to also include Lagos Nigeria.

Mission

We aim to create value and make a difference in the industry by providing tailor-made solutions that are best suited to our customers' business interests and objectives.

Vision

To become a leading engineering consulting company driven by best practices, guaranteeing sustainable earnings growth and customer satisfaction.

Core Values

Our values are what define us and the decisions we make. They always have and always will continue to guide us and influence the decisions we make.



People



Integrity



Customer Satisfaction

Services

Safety & Risk

At PetroPlat we are committed towards building a culture where effective and economic safety and risk management are of the highest priority. We encourage our clients to work towards the same common goal of zero harm. We are **United in Safety**. PetroPlat offers a full range of technical consulting services in managing process risks such as:

◆ Safety & Risk

- * Quantitative Risk Analysis
- * Fire Risk Analysis
- * Explosion Risk Analysis
- * Building Risk Assessment
- * Emergency Evacuation Rescue Analysis
- * Emergency Systems Survivability Analysis
- * Flare Radiation, Dispersion and Noise
- * Ship Collision Study
- * Dropped Object Study
- * Matrix of Permitted Operations (MOPO)
- * Fire and Gas Mapping
- * Design/Operations Performance Standard
- * HSE CASE/Safety Case/HSEIA
- * Risk Based Inspection
- * Written Scheme of Examination
- * Pre-startup Safety Review
- * Acoustic-Induced Vibration Analysis
- * Functional Safety Plan

◆ Fire Protection Design

- * Fire Water Network Analysis - Steady State
- * Fire Water Network Analysis - Transient
- * Deluge System Sizing and Design
- * Sprinkler System Sizing and Design
- * Fire Water Pump Sizing and Design

◆ Safety Workshops

- * HAZOP
- * HAZID
- * LOPA (SIL Determination)
- * Bow-Tie
- * ALARP
- * Risk Reduction Workshop
- * Layout Review Studies
- * SIMOPS
- * HAZAN

◆ CFD Modelling

- * Exhaust Dispersion
- * Thermal Plume
- * Gas Dispersion
- * Flare Deflagration/Dispersion
- * Explosion Assessment

◆ Reliability Studies

- * RAM Study
- * Reliability Centered Maintenance
- * FMECA / FMEA





Services

Process Engineering Consulting

Our specialized consulting services aim to provide optimal designs and concepts which facilitate growth and add value to our customers' business interests. Our strong process engineering experiences and knowledge of modern Industrial Standards and Practices allows us to develop solutions packages for both Greenfield and Brownfield projects.

New Plant Development Services

- ◆ Process Screening
- ◆ Feasibility Design
- ◆ Conceptual Design
- ◆ Technical Design Review
- ◆ Bid Evaluation
- ◆ FEED & Detailed Engineering Support
- ◆ Start-up and Commissioning Support

Operational Plant Services

- ◆ Performance Assessment
- ◆ Optimization
- ◆ Debottlenecking
- ◆ Troubleshooting
- ◆ Operational Support

The above services are applicable to a wide range of facilities including but not limited to:

- ◆ Offshore Platform
- ◆ FPSO
- ◆ Onshore gas processing plants
- ◆ Refineries
- ◆ Petrochemical Plants
- ◆ LNG Import/Export Terminals
- ◆ Compressor Stations
- ◆ Pipelines



Services

Advanced Engineering Analysis

Our technical specialists have been involved in numerous large scale projects both locally in Australia, Nigeria and abroad. This has allowed us to develop a specific set of skills and services that are often critical during engagement of large developmental projects.

Key Services

- ♦ Flow Assurance
- ♦ Dynamic Simulation
- ♦ Pipeline Engineering Services
- ♦ Operator Training Simulator
- ♦ Linear Programming
- ♦ Heat Exchanger Design & Optimization
- ♦ Material Selection and Corrosion Management
- ♦ CAPEX & OPEX Estimation & Optimization





Services

Training

Our industry experts have the ability to provide our customers with the appropriate training services required. This is on account of our extensive experience in process design for variety of projects, from simulation through use of the industrial standard design and experience we have observed that users often do not take complete advantage of their process simulation software.

The following is list of Training Courses which PetroPlat presents to its Clients:

- ⌘ P&ID's and PFD's Development
- ⌘ Fundamentals of Pump and Compressor System
- ⌘ Process Safety Engineering - Relief & Blowdown System
- ⌘ Process Utility System Design
- ⌘ Relief, Flare & Vent System
- ⌘ Separation Equipment— Selection & Sizing
- ⌘ Flare Network Simulation by FLARENET
- ⌘ Steady State Process Simulation by HYSYS

We can provide tailor-made packages and hands on training, for the Clients need.





Health, Safety, Environment & Quality

Throughout the project duration, PetroPlat insists upon the integration of high standards of safety and control of environmental impact(s). In response to our clients needs, our operations encompass the culture of quality management in accordance with appropriate quality assurance requirements to ensure the project is completed safely, on time and within the budget.

PetroPlat is committed to an incident-free workplace everyday, everywhere. Our performance depends on our ability to continually improve the quality of the services we provide to our clients while protecting people and minimizing environmental impact. We will always communicate openly on QHSE issues with our stakeholders and share our experience and knowledge of successful QHSE initiatives with them.

Risk Management

PetroPlat will strive to mitigate the impact of any foreseeable hazards, which may endanger health, safety and the environment or could affect the quality of products and services it provides. This will be achieved through formal risk assessment as required per Company Policies and Procedures.





Our Clients & Partners



Shell



TotalEnergies



NPDC



ExxonMobil



AMNI INTERNATIONAL PETROLEUM
DEVELOPMENT COMPANY LIMITED





We aim to differentiate ourselves in the industry in that we are committed to working together with our clients and also passing on our skills, knowledge and capabilities to them. PetroPlat's success has always been defined by the quality of our work and the satisfaction of our customers.

We always endeavor to positively impact your business and in that regard, *we measure our success by your success.*

"We are on ***your*** side".

Contact Us

Melbourne (Head Office)

Suite 3, 329 Mitcham Rd, Mitcham, VIC 3132, Australia
Tel.: +61 431 817 350
info@petroplat.com
www.petroplat.com

Lagos

4th Floor, Brasas'r Place, 69 Admiralty Way. Lekki
Phase 1, Lagos, Nigeria
Tel. +234 9088349057
info@petroplat.com
www.petroplat.com